

## The Great North Road...

### Day 1 & 2: Livingstone (FB/HL)

Your flight brings you to Livingstone where the mighty Victoria Falls form the backdrop for our birding for the next couple of days as we explore the Batoka gorge and the surrounding broad-leaved woodlands. Birding along the Zambezi river is particularly rewarding. (Narina Trogon, Crowned Hornbill, Trumpeter Hornbill, Dusky Lark, Taita Falcon, Schalow's Turaco, African Hobby, Miombo Pied-Barbet)

### Day 3 & 4: South Kafue National Park (FB/HL)

The Kafue National Park is Zambia's largest national park and is home to a great variety of mammalian and avian fauna. Apart from the great mammal viewing our focus here will be the Black-cheeked Lovebird which is a near-endemic in Zambia along with a host of other species resident in the area. (Black-cheeked Lovebird, Grey-crowned Crane, Bohm's Bee-eater, Wattled Crane, Grey-headed Parrot, Red-throated Twinspot)

### Day 5 & 6: Choma (FB/HL)

The Choma area is the most reliable area for picking up Zambia's only true endemic, the Chaplin's Barbet (now often referred to as Zambian Barbet). We explore the adjoining broadleaved woodland and fig groves from our lodge. (Chaplin's Barbet, Shelley's Sunbird, Arnot's Chat, Miombo Pied Barbet, Miombo Tit, White-breasted Cuckoo-Shrike)

### Day 7 & 8: Siavonga – Lake Kariba (FB/HL)

Our journey takes us further north and east to the shores of Lake Kariba and the town of Siavonga where our primary target will be the Angola Pitta. (Angola Pitta, Barred Cuckoo, African Emerald Cuckoo, African Broadbill, Livingstone's Flycatcher)



Straw-colored Fruit Bat - *Eidolon helvum*

### Day 9: Mkushi (FB/HL)

Back on the Great North Road we continue through the capital city of Lusaka and on to Forest Inn. The woodlands around Mkushi are widely considered to have some of the best *miombo* birding in Zambia. (Black-necked Eremomela, Yellow-bellied Hyliota, Southern Hyliota, Little-spotted Woodpecker, Violet-backed Sunbird, Spotted Creeper)

### Day 10, 11 & 12: Kasanka NP (FB/HL)

Heading off the beaten track we move further north to the small but wild and beautiful Kasanka National Park. This area is home to a vast number of birds and on this trip it is the focal point for the staggering sights provided by the Straw-coloured

Fruit Bat migration. We spend three days exploring this area, spending sunsets at one of the lofty hides that overlook the bat migration and also give us a good chance of spotting the rare Sitatunga antelope. (Ross' Turaco, Bohm's Bee-eater, Olive Woodpecker, African Finfoot, Pel's Fishing-Owl, Half-collared Kingfisher, Western-banded Snake-Eagle)

Day 13, 14 & 15: Mutinondo Wilderness (FB/HL)

We now head further east for the vast Mutinondo Wilderness which is another birding mecca and the last birding hotspot on our safari. (Souza's Shrike, Rufous-bellied Tit, Bocage's Akalat, Reichard's Seedeater, Marsh Widowbird, Fawn-breasted Waxbill, Marsh Tchagra, Bar-winged Weaver)

Day 16: Mkushi (FB/HL)

After a bit of morning birding around the lodge we leave Mutinondo Wilderness and head back to the Forest Inn for a last bit of focused *miombo* birding to pick up any species that may have escaped us previously. In the evening we will have a chance to finalise our birdlists for the trip.

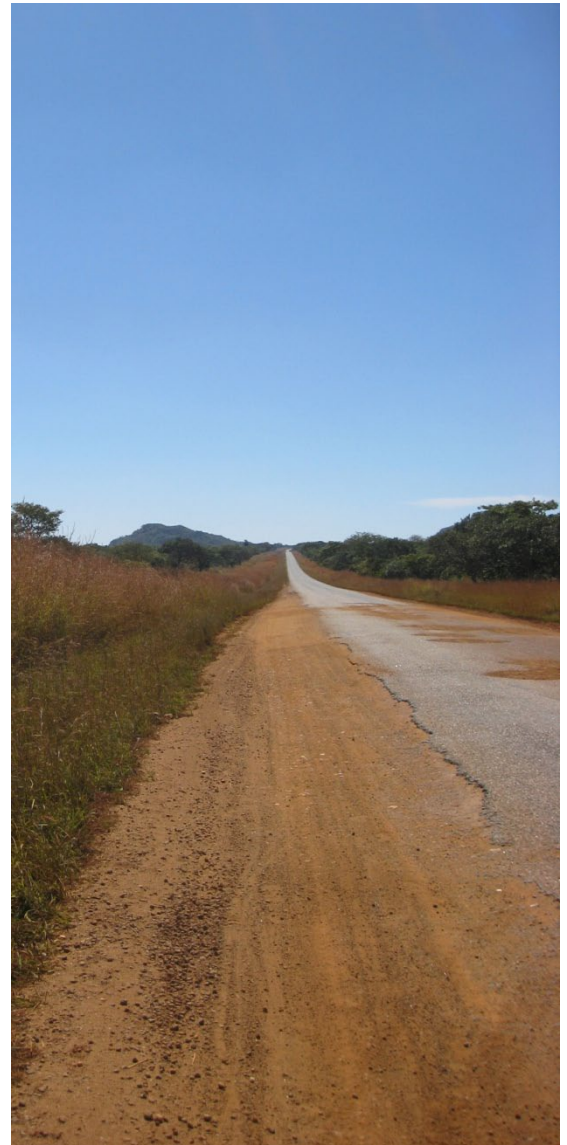
Day 17: Safari ends (FB/HL)

Sadly all good things must come to an end. After breakfast we hit the road for the final leg of the journey to Lusaka where you will board your onward flights.

The Guides: Although there is a strong birding element to this safari, all other aspects of natural history are covered. Our guides are consummate naturalists and will ensure your particular interest is addressed.

Total possible species for safari: 650+  
Likely to record (November): 350 - 400

Price per person: USD 5750.00  
Single supplement: USD 575.00  
Maximum Group Size: 9



The Road To Mutinondo - Dr J. Richards

### Abbreviations and Exclusions

FC/HL Indicates full board in a lodge or hotel. This includes dinner, bed and breakfast, lunches will often be packed lunches or will be purchased in transit. Mineral water is included, all other drinks are excluded. Price excludes international flights and Zambian visa fees where applicable. Excludes gratuities for guides and camp staff. All travellers must have comprehensive medical and travel insurance before commencing the trip. Itinerary may be subject to change without notice depending on local conditions and at the discretion of the guide. Please refer to our Terms and Conditions for more details.

2011 & 2012 Departure Dates Ex Livingstone  
7<sup>th</sup> November 2011, 12<sup>th</sup> November 2012